

# Kirup Kapers Rogaine

WARA State Championships. 24 and 25 August 2002

SCALE 1:50,000, 5 metre contour interval  
0 1km 2km 3km

Western Australian  
Rogaining Association  
PO Box 1201  
Subiaco, WA 6904

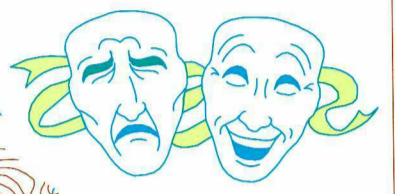
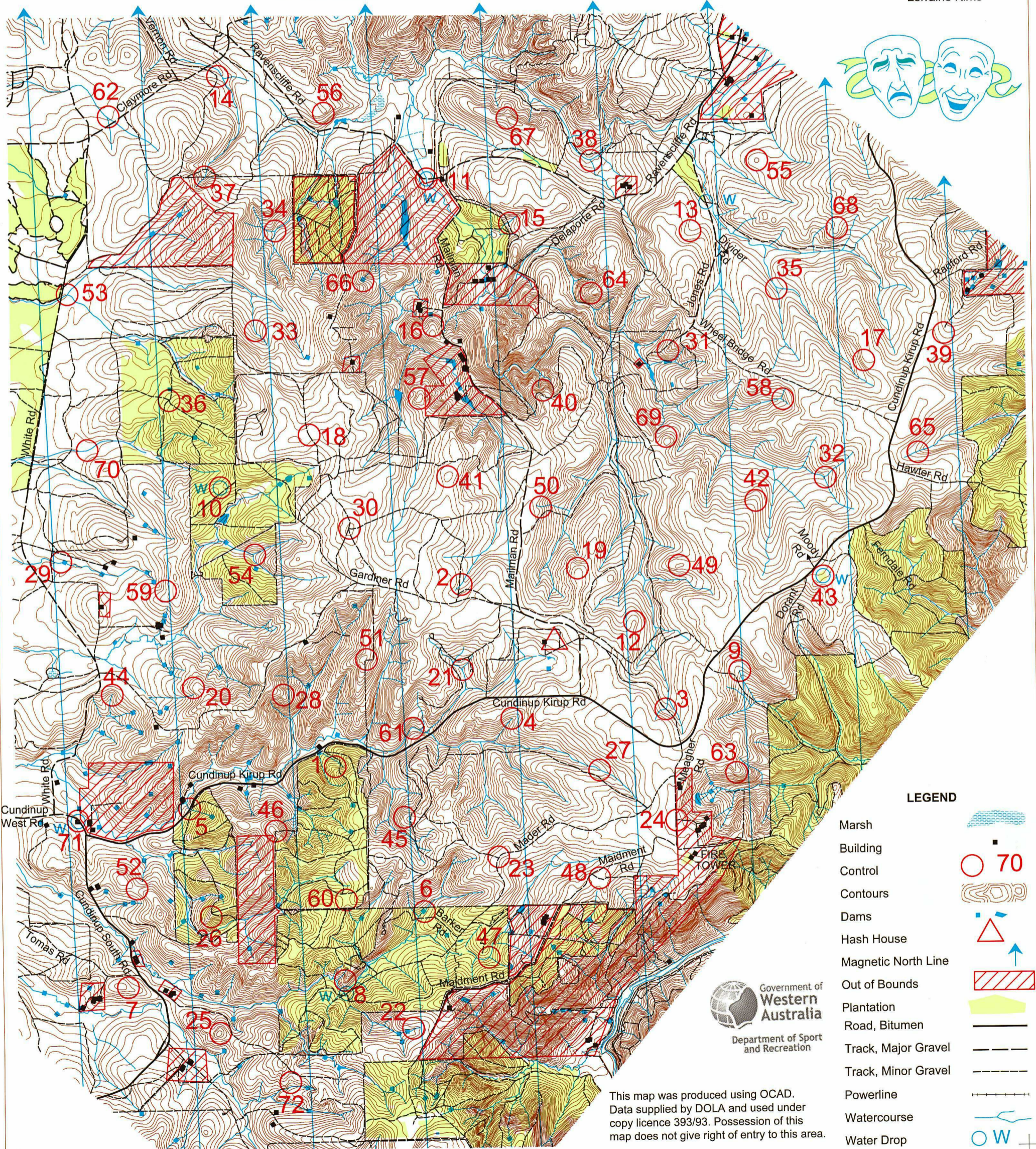
wa.rogaine.asn.au

### SPECIAL THANKS TO THE LAND OWNERS

Larry Maiolo, Colin & Val Delaporte, John Hunt, Joe Martella, Steve Benzie & Sandy Lyons, Peter Hynes, Kim & Fiona Bailey, Peter Vickridge, Fred Huis & Jeff Knock, Paul & Maria Bidwell, Justin Barrett, Bill Olde & Mark Tomas, Gerald & Cheryl Brown, LW & LB Goodram, Keith Bedford, Rob & Liza Dawson, Mario & Sue Camarri, Alfred & Karen Carroll, WA Plantation Resources, Christopher & Jean Brown, Shane & Bobbi Brown, F, R & O Procopio, Brian & Frances Tomas, T.L. Weir and CALM.

### SETTERS AND VETTERS TEAM

Owen Horton  
Brian Wade  
John Kirke  
Dan Hugo  
Ray Parks  
Dianne Parks  
Lorraine Kirke



### LEGEND

- Marsh
- Building
- Control
- Contours
- Dams
- Hash House
- Magnetic North Line
- Out of Bounds
- Plantation
- Road, Bitumen
- Track, Major Gravel
- Track, Minor Gravel
- Powerline
- Watercourse
- Water Drop



This map was produced using OCAD. Data supplied by DOLA and used under copy licence 393/93. Possession of this map does not give right of entry to this area.

# KIRUP KAPERS ROGAINE

## WARA State Championships 24 and 25 August 2002

No.	Description	Points	No.	Description	Points	Important Information
1	The spur, rocky outcrop	20	37	The Track/creek crossing	60	<b>Control Cards</b>
2	The Well (approach with caution)	20	38	The creek junction	60	From 1130 Saturday
3	The track/creek intersection	20	39	The old gravel pit	60	
4	The water course	20	40	Head of a gully	60	<b>Briefing</b>
5	The road/creek crossing - 50m @ 110°	20	41	The broad summit	60	1145 Saturday
6	The dam - South side	20	42	The broad spur	60	
						<b>Start</b>
7	The summit - East side	30	43	Open gravel area with trees	60	1200 Saturday
8	The spur	30	44	Head of a watercourse	60	<b>Finish</b>
9	Head of the creek	30	45	The spur	60	1200 Sunday
10	The saddle - North side of clearing	30	46	The spur - fence corner	60	
11	The bridge	30	47	The creek junction	60	<b>Hash House</b>
12	The broad spur	30	48	The track - on the Snotty Gobble tree ( <i>m.personia</i> )	60	Opens 1600 Saturday Closes 1330 Sunday
13	The broad gully	40	49	The knoll	70	
14	The bend in the track	40	50	Head of the watercourse	70	<b>Sunset</b>
15	The track/creek intersection	40	51	The most Western fence corner	70	1753 Saturday
16	The spur	40	52	The saddle	70	<b>Sunrise</b>
17	The summit - South end	40	53	The creek intersection - 20m at 190°	70	0644 Sunday
18	The track - on the crest	40	54	The creek junction	70	
						<b>Moonrise</b>
19	The ridge - North end	40	55	The knoll	80	1906 Saturday
20	The broad spur - Northwest side	40	56	The spur	80	<b>Moonset</b>
21	The creek junction	40	57	The summit	80	0810 Sunday
22	The creek	40	58	The creek junction	80	
23	The track junction	40	59	Head of the gully	80	
24	The old telephone box - 100m @ 280°	40	60	The saddle	80	<b>Controls Used</b>
						72
25	The summit	50	61	A creek bend-near a rock face (approach with caution from North)	90	
26	The spur - East side	50	62	The creek junction (indistinct)	90	<b>Total Points</b>
27	The creek - North side by fallen log	50	63	The spur	90	4140
28	The spur	50	64	The spur	90	
29	The creek	50	65	The creek	90	
30	The broad summit	50	66	The dam - North side	90	<b>PATROLLED ROADS</b>
						Cundinup-Kirup Rd
31	The spur	50	67	The ridge	100	Ravenscliffe Rd
32	The creek junction	50	68	The spur	100	White Rd
33	The bend in the creek - East side	50	69	The broad spur	100	Mailman Rd
34	The creek junction	50	70	The creek	100	Maidment Rd
35	The creek junction	50	71	The old school lunch shed	100	Gardiner Rd
36	The track intersection	50	72	The shallow gully	100	Mader Rd
						Roads patrolled every 4 hours commencing at 1400 Saturday
71	Water Drop:		43	Water Drop:		
10	Water Drop:		8	Water Drop: Near 8		
11	Water Drop:		13	Water Drop: Near 13		